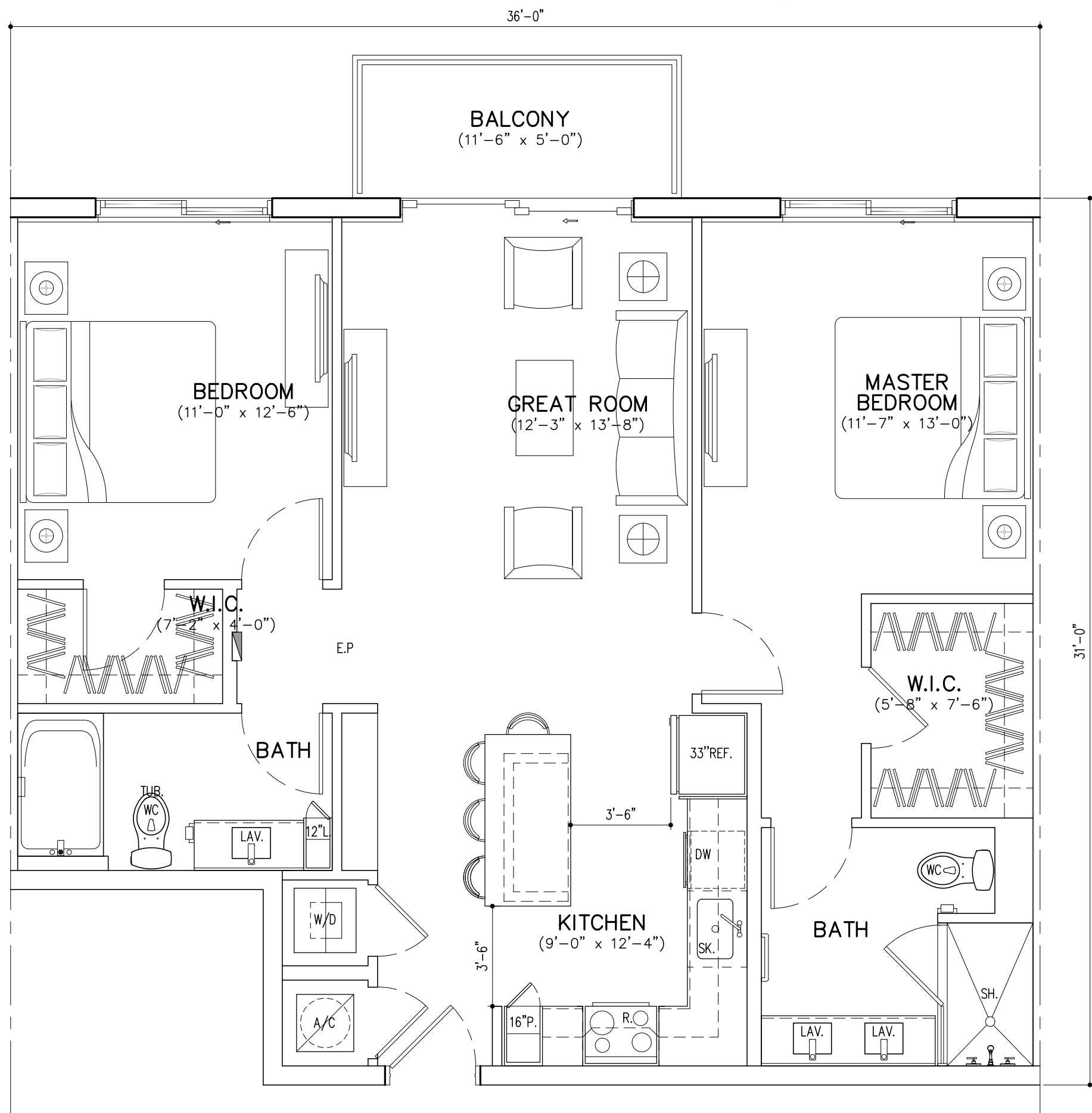
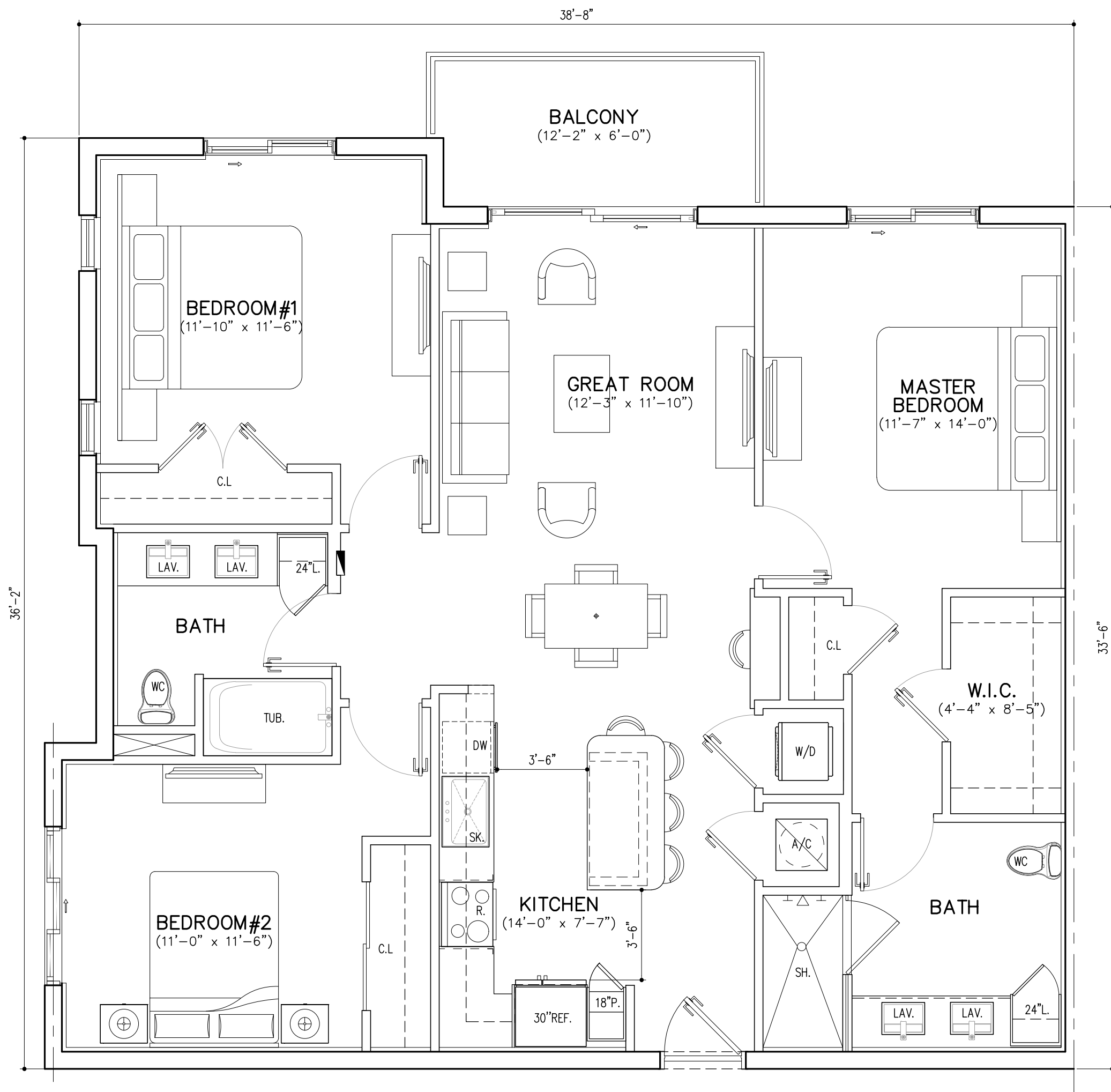


UNIT B2 (2BD/2BTH)
GROSS AREA = 1066 SQ. FT. (60 DU'S)
BALCONY = 50 SQ. FT.



UNIT B3 (2BD/2BTH)
GROSS AREA = 1056 SQ. FT. (32 DU'S)
BALCONY = 58 SQ. FT.



UNIT C1 (3BD/2BTH)
GROSS AREA = 1344 SQ. FT. (20 DU'S)
BALCONY = 77 SQ. FT.

UNIT PLANS

SCALE: 1/4"=1'-0"

DRC SUBMITTAL 06/13/2023
PZ23-12000017
07/19/2023

MSA ARCHITECTS

ARCHITECTURE & PLANNING

FOR: MORGUARD
LOCATED AT:
POMPANO BEACH, FLORIDA

BEATRIZ M. VELAZQUEZ
ARCHITECT
AR0094576

STATE OF FLORIDA
REGISTERED ARCHITECT
ARCH004576

BEATRIZ M. VELAZQUEZ
ARCHITECT
AR0094576

STATE OF FLORIDA
REGISTERED ARCHITECT
ARCH004576

MSA ARCHITECTS, INC.
AAC000895
8950 SW 74th COURT
SUITE 100
MIAMI, FLORIDA 33156
(305) 273-9911

OAKS @ PALM AIRE

FOR: MORGUARD
LOCATED AT:
POMPANO BEACH, FLORIDA

ARCHITECT'S BUILDING CODE STATEMENT/ TO THE BEST OF THE ARCHITECT'S KNOWLEDGE THE PLANS AND SPECIFICATIONS COMPLY WITH THE FLORIDA BUILDING CODE SEVENTH EDITION (2020) AND THE APPLICABLE FIRE SAFETY STANDARDS AS DETERMINED BY THE LOCAL AUTHORITY AND CHAPTER 633 FLORIDA STATUTES.
DRC SUBMITTAL 06/13/2023
PRE-APP MEETING 04/04/2023
BY

DRAWN
CONTRACT DATE 10/12/22
SCALE AS SHOWN
JOB NO. 2181.PRJ
SHEET TITLE:
SHEET NUMBER:
A-4.2

UNIT PLANS